



TECHNICAL PACKET

Warner Theatre  
811 State Street  
Erie, PA 16501  
(814) 453-7117  
(814) 454-7946 – Fax  
[erieevents.com](http://erieevents.com)

## Contents

Staff Directory & Contact Information .....	4
Directions to Warner Theatre.....	4
Physical Specifications: .....	5
Seating Capacity: .....	5
Stage Dimensions: .....	5
Orchestra Pit Dimension:.....	5
Loading Bays: .....	5
Stage Box Rigging Information: .....	6
General Data.....	6
Front of House Rigging Information: .....	6
Front of House Truss: .....	6
Audio:.....	6
Line set Schedule: .....	7
Show Power .....	8
In House Lighting System.....	9
Lighting Control: .....	9
Show Lighting Control: .....	9
Front Light Fixtures:.....	9
House Dimming System:.....	9
Lighting Control Location:.....	9
Followspots:.....	9
Comms: .....	9
House Dimmer Schedule: .....	9
House Audio .....	10
Front of House:.....	10
House Mixing Console: .....	10
Show Mixing Console:.....	10
Patching: .....	10
Production Communication.....	10
Assisted Listening System.....	10
Miscellaneous House Equipment .....	10

Risers: .....	11
Chairs and Stands: .....	11
Backstage Rooms: .....	11
Building Maps .....	12
Auditorium Seating Chart: .....	12
Basement Floor Plan:.....	13
1 <sup>st</sup> Floor / Stage Floor Plan.....	14
2 <sup>nd</sup> Floor Plan .....	15
3 <sup>rd</sup> Floor Plan.....	16
4 <sup>th</sup> Floor Plan.....	17
Parking Map.....	18

## Staff Directory & Contact Information

	<u>Position</u>	<u>Direct</u>	<u>E-mail</u>
John "Casey" Wells	Executive Director	814-480-6012	<a href="mailto:casey@erieevents.com">casey@erieevents.com</a>
Brigid Doyle	Executive Assistant	814-480-6035	<a href="mailto:brigid@erieevents.com">brigid@erieevents.com</a>
Ed Snyder	Assistant Director	814-480-6049	<a href="mailto:esnyder@erieevents.com">esnyder@erieevents.com</a>
Barry Copple	Operations Manager	814-480-6009	<a href="mailto:barry@erieevents.com">barry@erieevents.com</a>
Ryan Patsy	Production Manager	814-440-8612	<a href="mailto:rpatsy@erieevents.com">rpatsy@erieevents.com</a>
Ann Noble	Box Office Manager	814-480-6018	<a href="mailto:ann@erieevents.com">ann@erieevents.com</a>
Reine Neal	Asst. Box Office Manager	814-480-6017	<a href="mailto:reine@erieevents.com">reine@erieevents.com</a>
Barry LaCastro	I.A.T.S.E Business Agent	814-882-1172	<a href="mailto:business@erieiatse.com">business@erieiatse.com</a>
Dawn Betza	Marketing Coordinator	814-480-6010	<a href="mailto:dawn@erieevents.com">dawn@erieevents.com</a>

Administrative Offices 814-453-7117

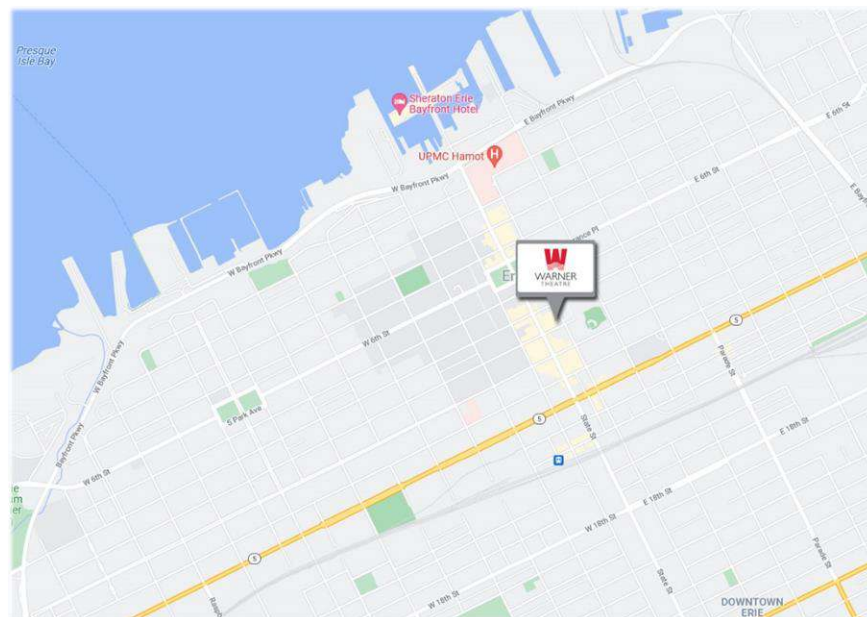
Box Office 814-452-4857

Daily Box Office located at the Erie Insurance Arena at 809 French Street, Erie, PA 16501.  
 Warner Theatre Box Office opens one hour prior to doors.

Monday – Friday Event Days:	10:00 AM - Intermission
Non-Event Days:	10:00 AM - 5:30 PM
Saturday Event Days:	10:00 AM - Intermission
Saturday Non-Event Days:	10:00 AM - 2:00 PM
Sunday Event Days:	12:00 PM - Intermission

## Directions to Warner Theatre

Please Use 98 East 9<sup>th</sup> Street, Erie, PA 16501 for GPS Directions to Loading Dock / Rear of Warner Theatre.  
 Please Use 811 State Street, Erie, PA 16501 for GPS Directions to Main Entrance of Warner Theatre



**FROM THE EAST: BUFFALO, NY via I-90**

Take I-90 west toward Erie  
 Take exit 32 from I-90 W toward for PA-290/PA-430 toward Wesleyville 0.2 mi.  
 Turn right onto PA-290 W/PA-430 W 5.3 mi.  
 Continue onto Bayfront Parkway 1.7 mi.  
 Turn left onto State Street 0.6 mi.  
 Turn left onto 9<sup>th</sup> Street– Loading Dock on left side of street

**FROM THE WEST: CLEVELAND, OH via I-90**

Take I-90 east toward Erie  
 Take exit 22B from I-90 E for I-79 N 0.2 mi.  
 Take I-79 N toward Erie 6.5 mi.  
 Continue onto Bayfront Parkway 2.7 mi.  
 Turn right onto State Street 0.6 mi.  
 Turn left onto 9<sup>th</sup> Street– Loading Dock on left side of street

**FROM THE SOUTH: PITTSBURGH, PA via I-79**

Take I-79 north toward Erie  
 Continue onto Bayfront Parkway 2.7 mi.  
 Turn right onto State Street 0.6 mi.  
 Turn left onto 9<sup>th</sup> Street – Loading Dock on left side of street

## Physical Specifications:

### Seating Capacity:

Orchestra Level; Permanent: ..... 1511  
 Orchestra Level; Pit:..... 50  
 Balcony Level: ..... 708

### Stage Dimensions:

Proscenium width ..... 70'  
 Proscenium height ..... 32'  
 Stage width ..... 96'  
 Stage depth ..... 44' 10"  
 Stage Surface ..... 4,803 sq. ft.  
 Wing space stage left ..... 13'  
 Wing space stage right ..... 17'  
 Stage height ..... 3' 6"  
 Stage Loading Opening ..... 15' W x 18' H  
 Stage deck is Masonite and is able to be lagged

### Orchestra Pit Dimension:

Gala Pit Elevator to accommodate 4 levels; trap,  
 orchestra, seating and stage  
 Width ..... 56'  
 Depth ..... 10' 6" At Center  
 Capacity ..... 50

### Stage Trap

Upstage to downstage .....30' 4"  
 Stage left to stage right ..... 42' 4"  
 From floor to deck .....12' 1"  
 Constructed of 4' x 8' decks that are able to be removed.  
 Decking is able to be cut.

### Loading Bays:

#### There are no loading docks.

Location .....Upstage Right  
 Number of bays .....2  
 Bay door width .....8' 4"  
 Bay door height .....13' 1"  
 Push to stage .....15'  
 Bay at grade, must ramp or fork.  
 Space for two trucks in bays.  
 Additional parking on French St.  
 Shore power is available on French and in the bay.



## Stage Box Rigging Information:

### General Data

Single purchase mechanical counter weight system	Grid height .....	80'
Total number of line sets .....	Out trim .....	68'
Batten width .....	In trim.....	4'
Arbor capacities.....	High loading bridge height.....	73' 6"
Total weight available .....	Low loading bridge height .....	66' 6"
	SL fly bridge height.....	36'
	SR fly bridge height .....	36'
Stage left spot lines.....		
Stage right spot lines .....	Black legs and borders .....	4 Sets
Grid horses for inverts.....	Full stage black .....	2
4' Grid Pipe.....	Black skrim .....	1
	Muslin cyc.....	1

Pin rails are located on the SL & SR fly bridges.  
 Locking rails and counter weight system are located stage right at deck level and on the fly bridge.  
 All battens are truss battens and have the ability to be cleared with advanced notice.  
 There is no elevator access to the fly bridges or grid, however there is a house utility motor if necessary.

## Front of House Rigging Information:

### Front of House Truss:

70' of 12" black box truss suspended off 5 motors above the plaster 18' downstage of the proscenium.

Each motor has a capacity for 1000# with a total load of 5000#

### Audio:

There are positions left right and center that are able to accommodate up to 1000#

**THESE ARE THE ONLY RIGGING POINTS DOWNSTAGE OF THE PROSCENIUM**

## Line set Schedule:

#	Distance From Proscenium	House Item	Show Item	Notes
0	0'-0"	Fire Curtain		-
1	1'-6"	1 - Tormenters		Drapery 30' H x 13'-6" W (Color: Black) Flat
2	2'-0"	2 – Main Curtain		Drapery 31' H x 75' W (Color: Stolen Kiss) Flat Vertical rising only
3	3'-0"	3 – No. 1 Leg		Drapery 30' H x 13'-6" W (Color: Black) Flat
4	3'-6"	4 – Scenery Batten		
5	4'-0"	5 - Scenery Batten		-
6	5'-0"	6 - Scenery Batten		-
7	5'-6"	7 - Scenery Batten		-
8	6'-0"	8 – Scenery Batten		-
9	7'-0"	9 – No. 1 Orch. Shell		-
10	8'-0"	10 - No. 2 Border		Drapery 8' H x 73' W (Color: Black) Flat
11	8'-6"	11 - No. 2 Leg		Drapery 30' H x 13'-6" W (Color: Black) Flat
12	9'-6"	12 - Scenery Batten		-
13	10'-0"	13 - Scenery Batten		-
14	10'-6"	14 - Scenery Batten		-
15	11'-6"	15 – Scenery Batten		-
16	12'-0"	16 – Scenery Batten		-
17	12'-6"	17- Scenery Batten		-
18	13'-0"	18 - Scenery Batten		-
19	13'-6"	19 - Scenery Batten		-
20	14'-6"	20 - Scenery Batten		-
21	15'-0"	21 - No. 3 Border		Drapery 8' H x 73' W (Color: Black) Flat
22	15'-6"	22 - No. 3 Leg		Drapery 30' H x 13'-6" W (Color: Black) Flat
23	16'-0"	23 - Scenery Batten		-
24	17'-0"	24 - Scenery Batten		-
25	18'-0"	25 – No. 2 Orch. Shell		-
26	19'-0"	26 - Scenery Batten		-
27	19'-6"	27 - Scenery Batten		-
28	20'-0"	28 - Scenery Batten		-
29	20'-6"	29 - Scenery Batten		-
30	21'-0"	30 - Scenery Batten		-
31	21'-6"	31 – No. 4 Border		Drapery 8' H x 73' W (Color: Black) Flat
32	22'-0"	32 – No. 4 Leg		Drapery 30' H x 13'-6" W (Color: Black) Flat
33	23'-0"	33- Scenery Batten		-
34	23'-6"	34- Scenery Batten		-



35	24'-0"	35- Scenery Batten	-
36	24'-6"	36- Scenery Batten	-
37	25'-6"	37 – Scenery Batten	
38	26'-6"	38- Scenery Batten	-
39	27'-0"	39- Scenery Batten	-
40	27'-6"	40- Scenery Batten	-
41	28'-0"	41- Scenery Batten	-
42	29'-0"	42 – No. Orch. Shell	-
43	30'-0"	43- No. 5 Border	Drapery 8' H x 73' W (Color: Black) Flat
44	30'-6"	44- No. 5 Leg	Drapery 30' H x 13'-6" W (Color: Black) Flat
45	31'-0"	45- Scenery Batten	-
46	31'-6"	46- Cyc Lights	-
47	32'-0"	47- Scenery Batten	-
48	32'-6"	48- Scenery Batten	-
49	34'-0"	49- Scenery Batten	-
50	34'-6"	50- Cyc	-
51	35'-6"	51 – Scenery Batten	-
52	35'-6"	52 – Scenery Batten	-
53	36'-0"	53- Flt Stage Black	Drapery 30' H x 81' X (Color: Black)
54	36'-6"	54- Scenery Batten	-
55	37'-6"	55- Scenery Batten	-
56	38'-0"	56- Scenery Batten	-
57	38'-6"	57- Scenery Batten	-
58	39'-0"	58- Scenery Batten	-
59	39'-6"	59 – Scrim	Black
60	40'-0"	60 - Scenery Batten	
	44'-10"	Back Wall	Concrete (Black)

## Show Power

All company switches have cam-lock style hook ups with dual reversed ground and neutral.

SHOW POWER	LOCATION	ELECTRICAL SERVICE
Panel A	Downstage Right	400 amp, 3 Phase
Panel B	Downstage Right	400 amp, 3 Phase
Panel C	Upstage Right	400 amp, 3 Phase
Panel D	Upstage Right	400 amp, 3 Phase
Panel E (Audio)	Upstage Left	400 amp, 3 Phase (Isolated Ground)
Panel F	Downstage Left	400 amp, 3 Phase
Panel G	Grid - Stage Right	200 amp, 3 Phase



## In House Lighting System

### Lighting Control:

ETC Gio

### Show Lighting Control:

Up to 4 universes of DMX or Streaming ACN

### Front Light Fixtures:

Cove ..... 32x 5\* @750w  
 Balcony Rail..... 24x 19\* @750w  
 Stage Left Tormenter..... 16x 19\* @750w  
 Stage Right Tormenter ..... 16x 19\* @750w  
 FOH Truss ..... 12x Par\* @575w  
*Confirm current availability*

### House Dimming System:

ETC Sensor D20 modules with circuits distributed throughout the stage.

### Lighting Control Location:

Back of auditorium location.

Under auditorium cable pass through from stage trap to mix.

### Followspots:

House Followspots ..... 4 Super Troupers 16k  
 Booth Location ..... 90' Throw to Proscenium

### Comms:

Wired single channel packs ..... 6  
 Dual ear headsets ..... 6  
 Single ear headsets..... 4  
 Wireless dual channel packs ..... 4

## House Dimmer Schedule:

Projection Booth.....	CT 1 – 6	First Electric (From Bridges) .....	CT 167 – 202
Ceiling Cove.....	CT 7 – 38	Second Electric.....	CT 203 – 238
FOH Truss .....	CT 39 – 56	Third Electric.....	CT 239 – 274
Stage Left Tormenter.....	CT 57 – 72	Fourth Electric.....	CT 275 – 310
Stage Right Tormenter .....	CT 73 – 88	Fifth Electric.....	CT 311 – 346
Balcony Rail .....	CT 89 – 112	Stage Left Booms (From Bridge) ....	CT 347 – 370
Orchestra Pit.....	CT 113 – 118	Stage Right Boom (From Bridge) ...	CT 371 – 394
Stage Left Forestage.....	CT 119 – 124	Works .....	CT 401 – 408
Stage Right Forestage.....	CT 125 – 130	Orchestra Shell .....	CT 409 – 418
Down Stage Left.....	CT 131 – 136		
Up Stage Wall .....	CT 137 – 160		

## House Audio

### Front of House:

Line Array ..... 9 JBL VTX Series A8 on each Stage Left & Stage Right  
Subs ..... 2 JBL VTX Series B18 on each Stage Left & Stage Right  
Front Fill ..... 6 JBL AC25  
Under Balcony ..... 8 JBL AC26  
Signal Processor ..... QSC Core 110f

### House Mixing Console:

Yamaha QL5 Console  
Yamaha Rio3224-D2 Stage Box  
In-House mix location. Under auditorium cable pass through from STAGE LEFT to mix.

### Show Mixing Console:

Ability to directly feed all zones of PA with independent Dante channels.  
Ability to feed the entire system with a stereo analog signal.

### Patching:

Type: Dante, Network Video, Com A/B, and SDI  
Location: USL, USC, USR, DSL, DSR, PIT ELEVATOR, TRAP ROOM, TRUCK BAY, FOH.

### Microphones:

Shure ULXD Handheld ..... 4  
Shure ULXD Lav Pack ..... 2

## Production Communication

ClearCom FreeSpeak II 4 Channel Wireless Production Intercom System  
ClearCom MS702 2 Channel Main Station w/ Power Supply  
ClearCom KB-701 Wall Station (22 in back of house rooms)

## Assisted Listening System

ListenTech ALS RF Transmitter  
ListenTech LA400 Ear Speaker Receivers  
ListenTech LA-166 Neck Loop Receivers

## Miscellaneous House Equipment

Distributed House Video System:  
Balcony mounted camera. Video displays in Star Dressing rooms, Green Room, Promoter Offices and Musicians Lounge.  
SDI Patch capabilities available.  
Wireless internet and hard wired drops are available  
30' JLG single man lift

**Risers:**

4' x 8', Reversible with Black PolyTrac/Gray Carpet Surfaces . . . . .	46
4' x 4', Reversible with Black PolyTrac/Gray Carpet Surfaces . . . . .	4
8" Fixed Height Support.....	24
16" Fixed Height Support.....	24
24" Fixed Height Support.....	24
32" Fixed Height Support.....	24
Chairstop, 8'.....	17
Chairstop, 4'.....	6
Stair - Basic 1 Step.....	2
Stair - Tilt & Tote 2 Step.....	2
Stair - Tilt & Tote 3 Step.....	2
Assorted black skirting	

**Chairs and Stands:**

Black Chairs.....	100
Music Stands.....	75

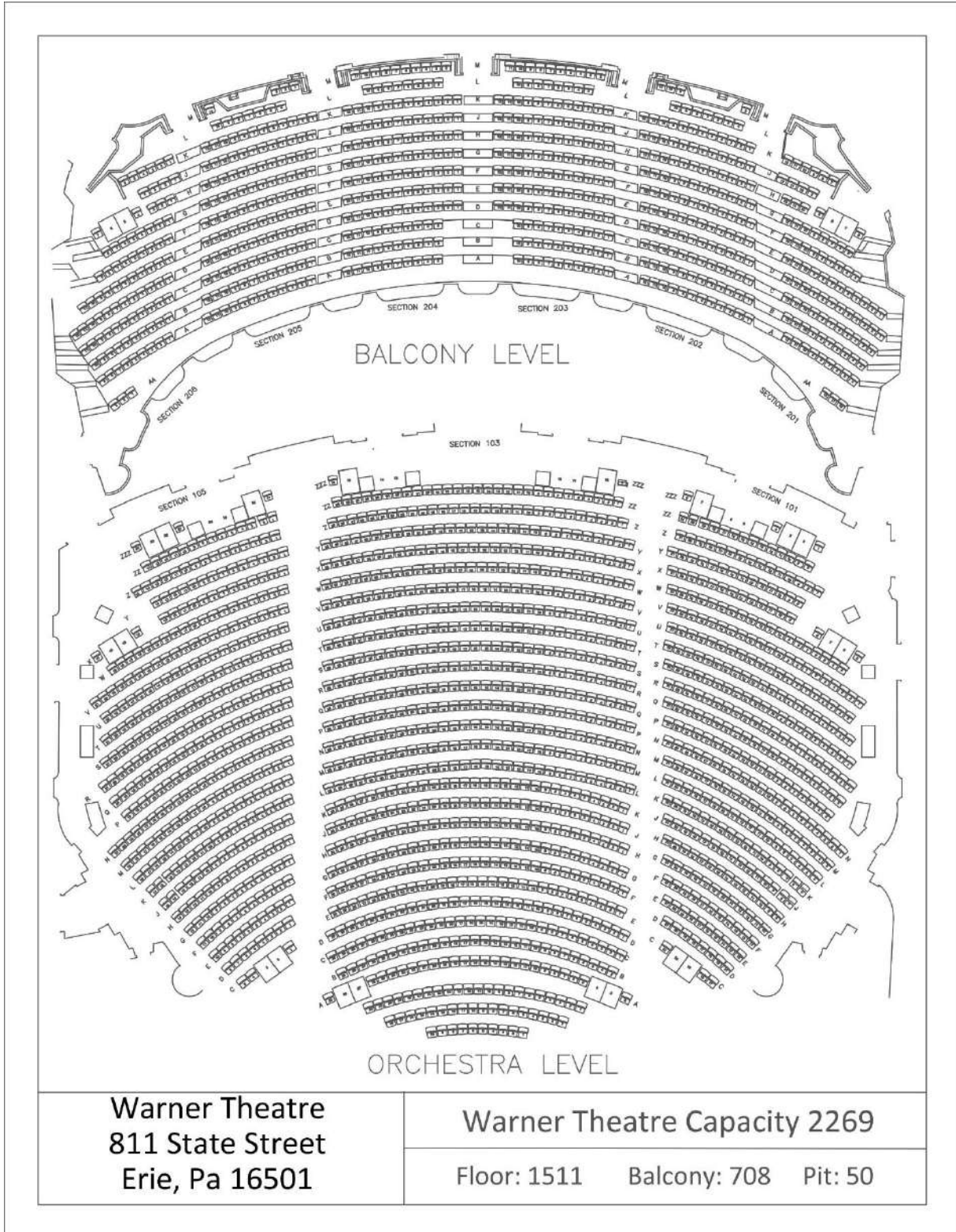
**Backstage Rooms:**

Telecommunication connections in all rooms. Production Communication in all rooms. Show paging system in all rooms.  
 Elevator access to all floors.

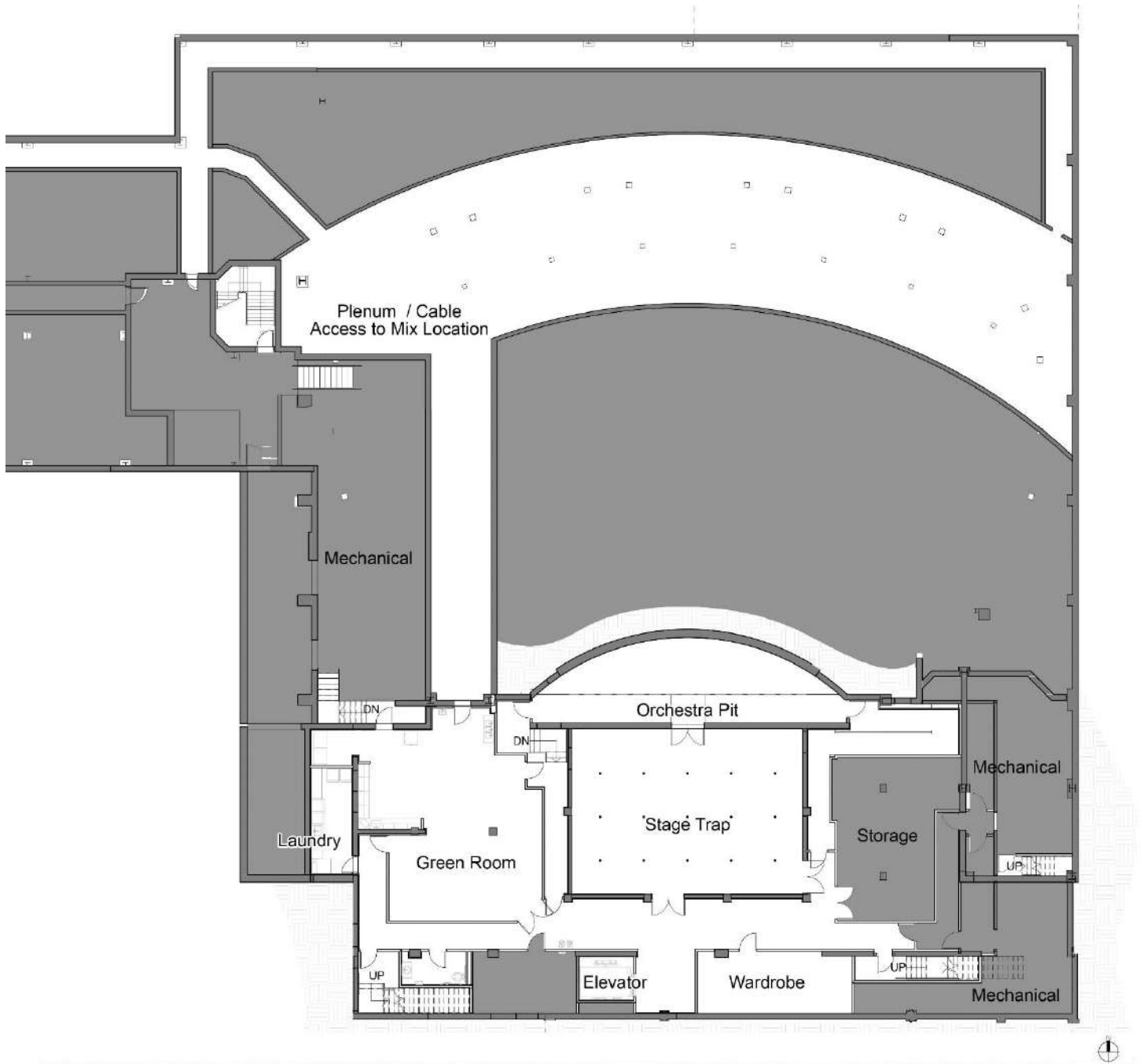
ROOM	LOCATION	STATION QUANTITY	SQUARE FEET	AMENITIES
101	1 <sup>st</sup> Floor Behind Stage Left	2	145	Sinks & Lighted Mirrors; Toilet & Shower
102	1 <sup>st</sup> Floor Behind Stage Left	2	123	Sinks & Lighted Mirrors; Toilet & Shower
103	1 <sup>st</sup> Floor Behind Stage Left	4	121	Sinks & Lighted Mirrors; Toilet & Shower
104	1 <sup>st</sup> Floor Behind Stage Left	4	133	Sinks & Lighted Mirrors; Toilet & Shower
105	1 <sup>st</sup> Floor Behind Stage Left	4	123	Sinks & Lighted Mirrors; Toilet & Shower
106	1 <sup>st</sup> Floor Behind Stage Left	-	103	
Office 107	1 <sup>st</sup> Floor Behind Stage Right	-	178	
Office 108	1 <sup>st</sup> Floor Behind Stage Right	-	130	
201	2 <sup>nd</sup> Floor (Elevator or Stairs)	8	186	Sinks & Lighted Mirrors; Toilet & Shower
202	2 <sup>nd</sup> Floor (Elevator or Stairs)	8	188	Sinks & Lighted Mirrors; Toilet & Shower
Musicians Lounge	2 <sup>nd</sup> Floor (Elevator or Stairs)	-	409	Corridor space with soft furniture, TV
301	3 <sup>rd</sup> Floor (Elevator or Stairs)	8	190	Sinks & Lighted Mirrors; Toilet & Shower
401	4 <sup>th</sup> Floor (Elevator or Stairs)	-	702	Sinks & Toilet
402	4 <sup>th</sup> Floor (Elevator or Stairs)	-	699	Sinks & Toilet
Green Room	Basement (Elevator or Stairs)	-	1,049	Kitchenette, Ice Machine
Wardrobe	Basement (Elevator or Stairs)	-	315	
Laundry	Basement (Elevator or Stairs)	-	165	2 Commercial UniMac Washers & Dryers

Building Maps

Auditorium Seating Chart:

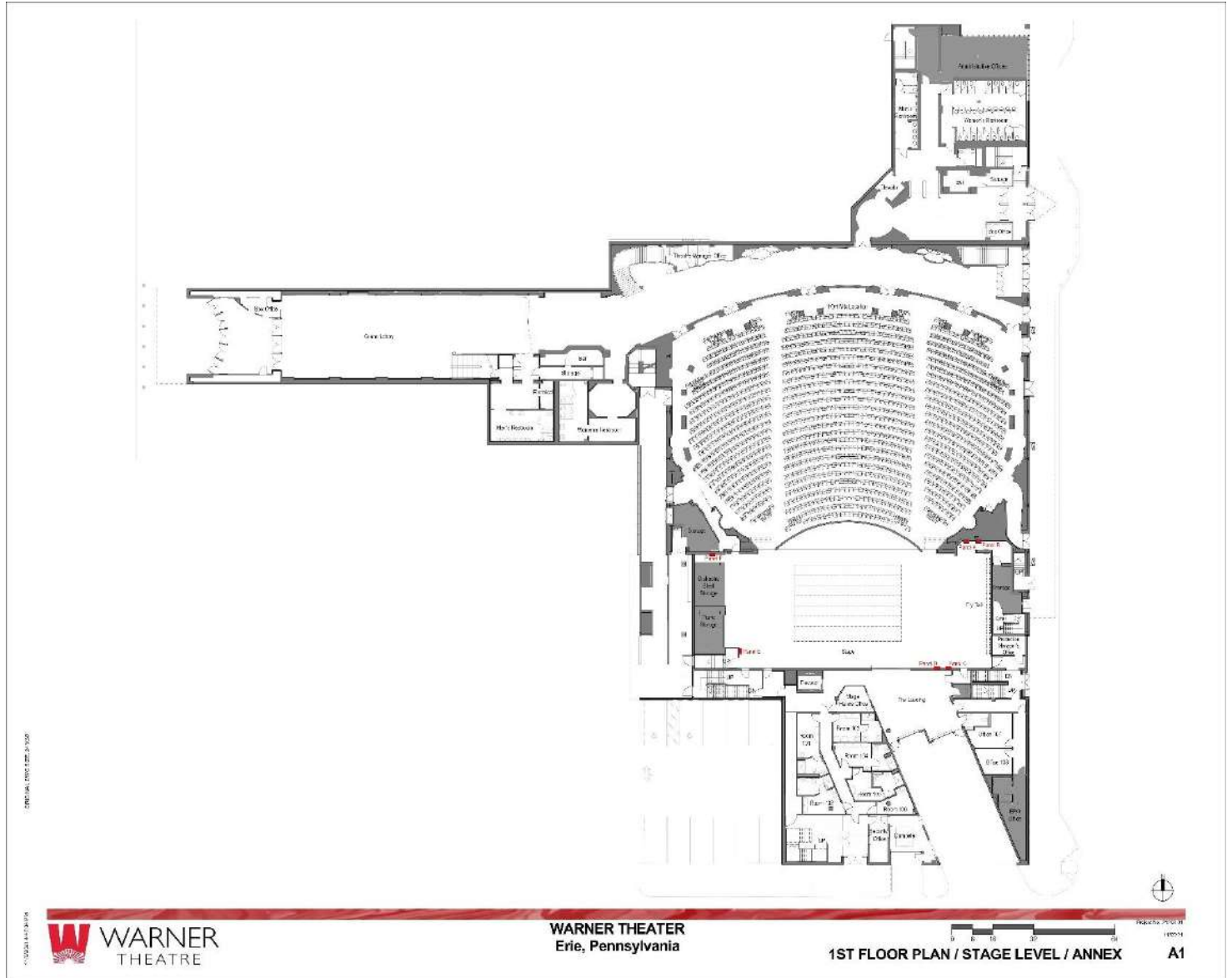


Basement Floor Plan:



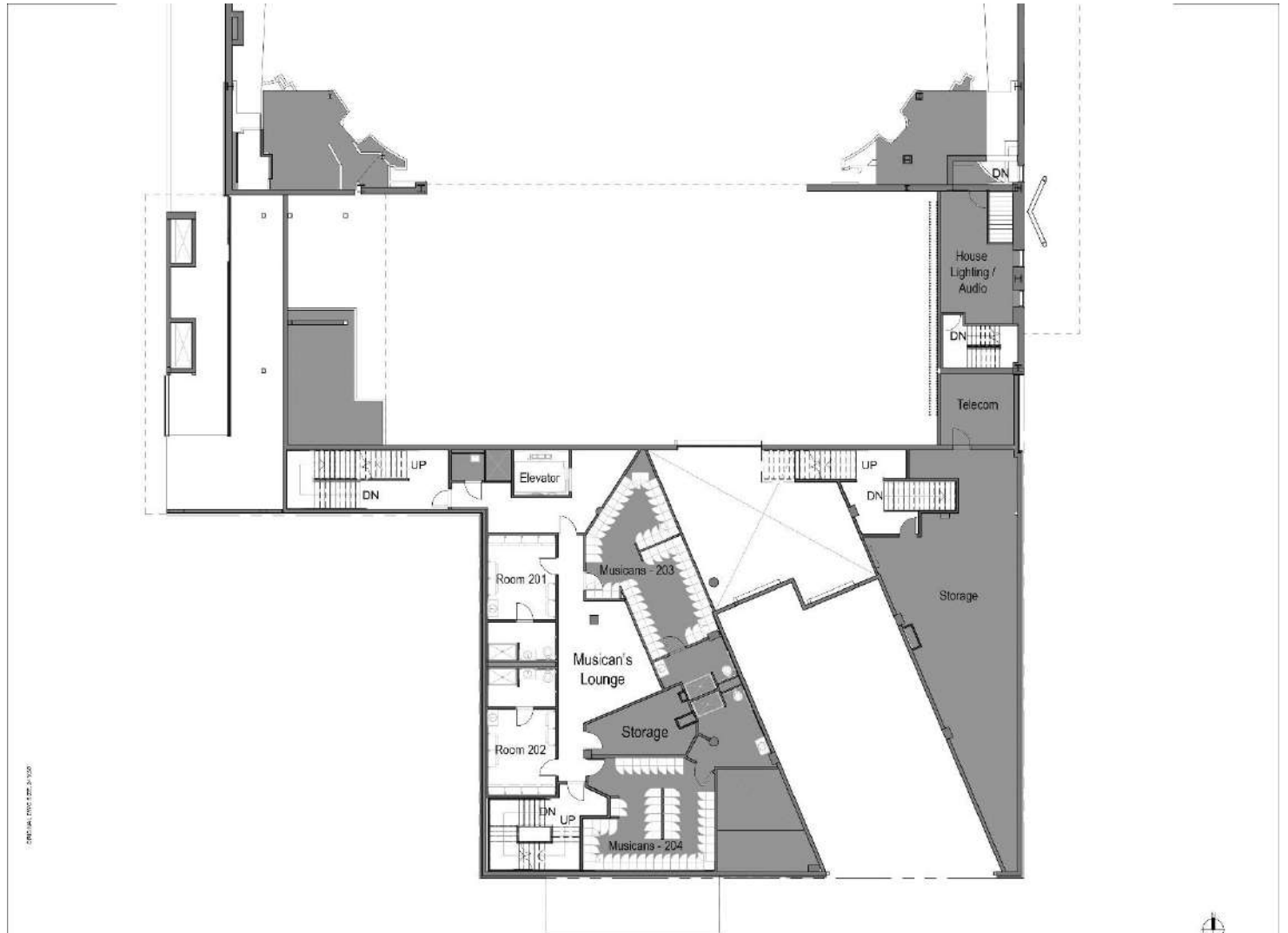


1<sup>st</sup> Floor / Stage Floor Plan



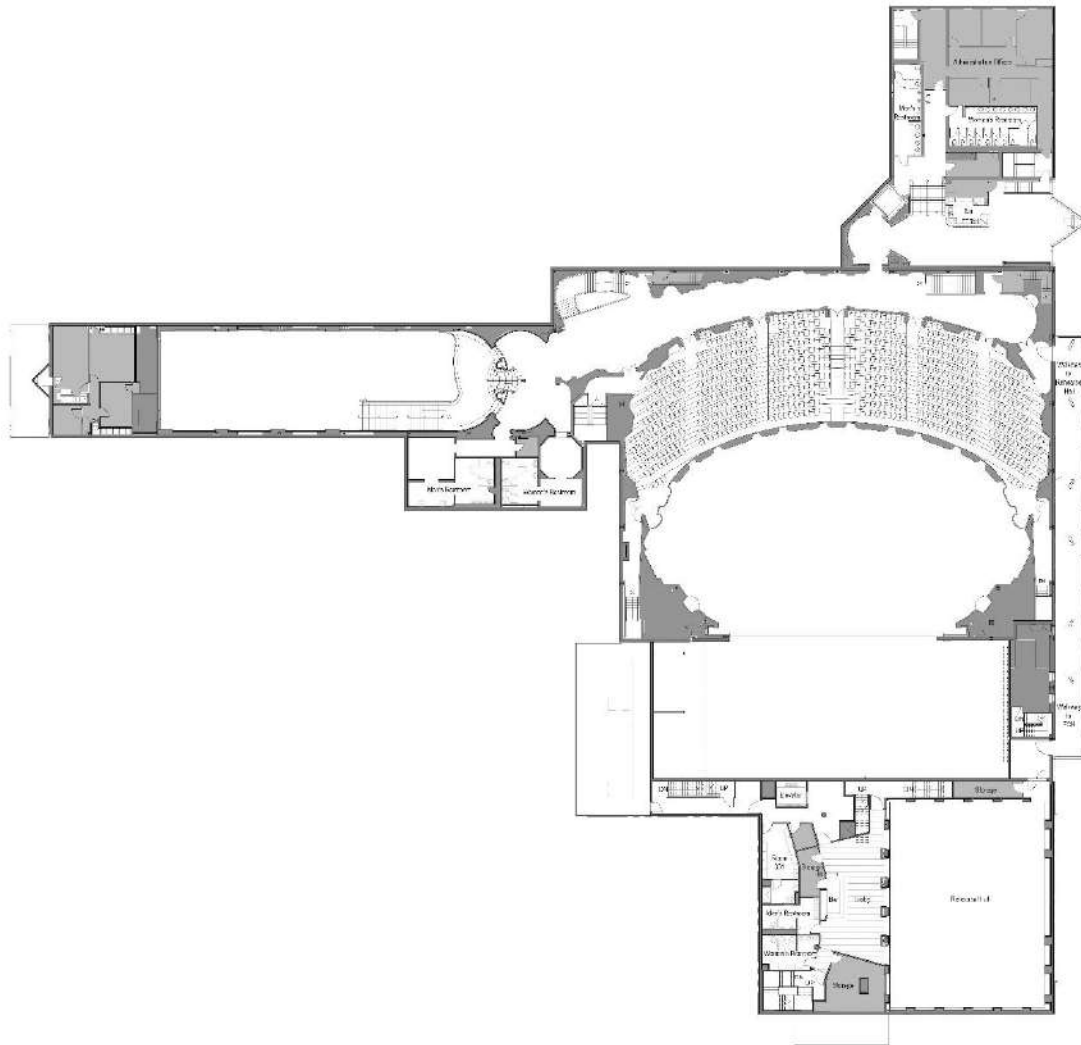


2<sup>nd</sup> Floor Plan



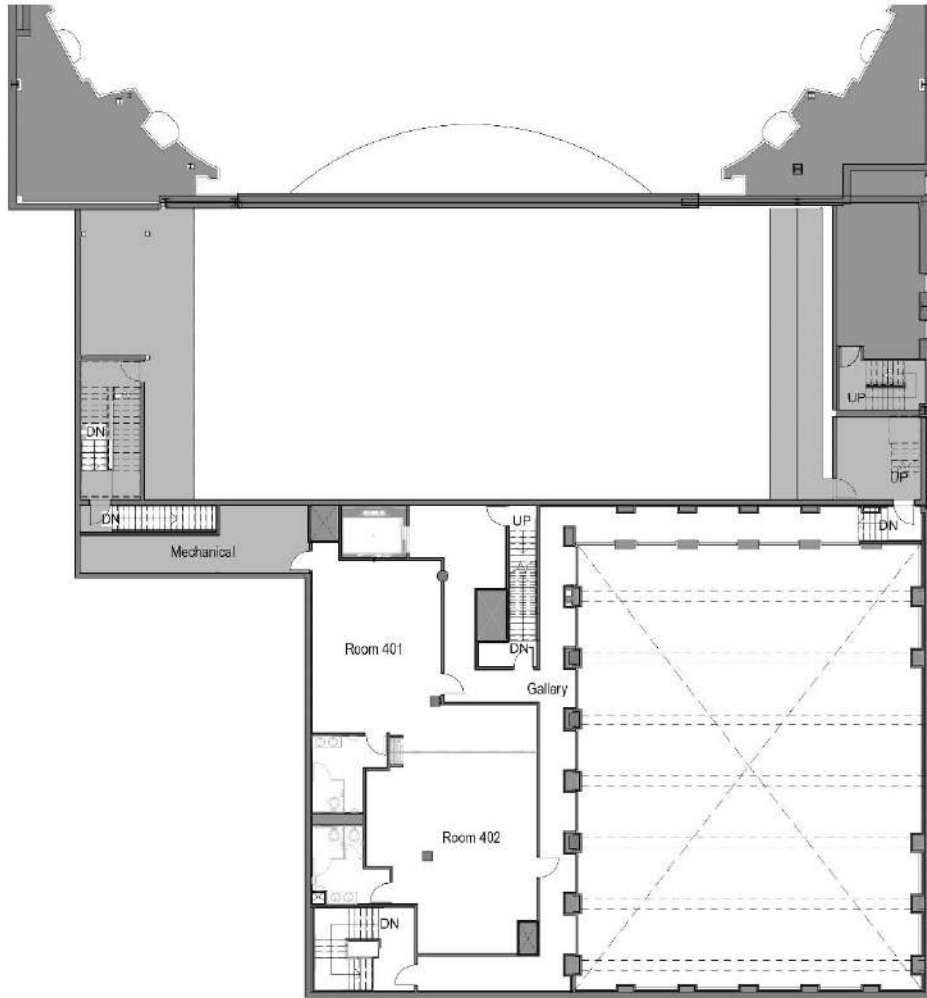
© 2021 W.A. 10/21/2021 10:00 AM

3<sup>rd</sup> Floor Plan



© ORIGINAL DRAWING BY [unreadable]

4<sup>th</sup> Floor Plan



© 2021 W.A. Warner, Inc. All Rights Reserved.

Parking Map

