

## Simon 3 installation and flashing guide

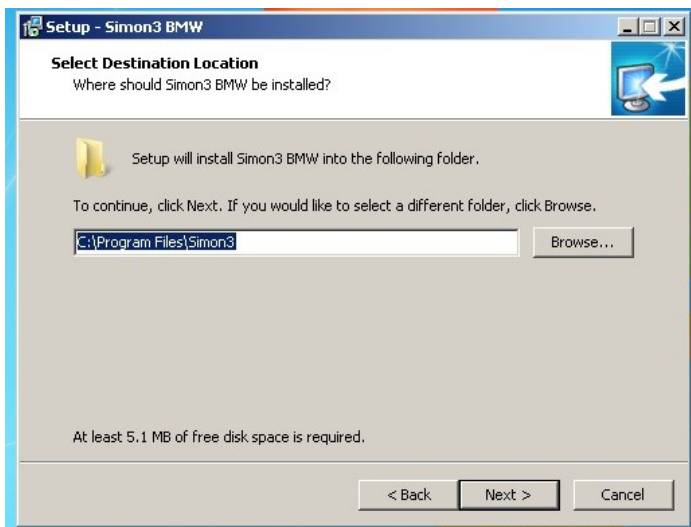
The Simon 3 is a tool to read and write your vehicle's Engine Control Unit (ECU), you will need to download the software to start with it using the following link:

<http://store.activeautowerke.com/pages/downloads>

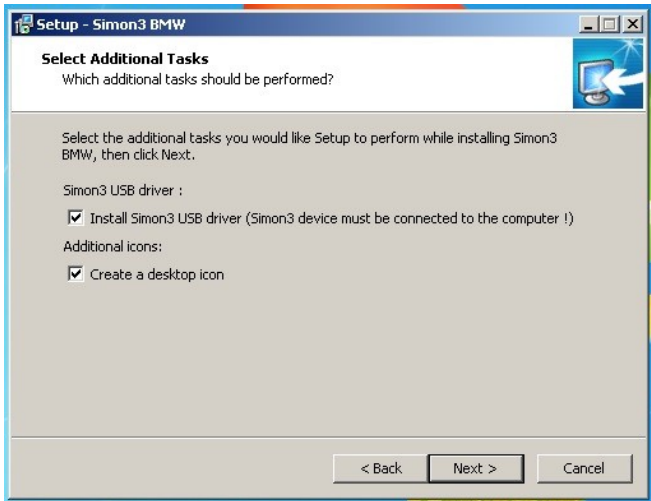
### Installing the software



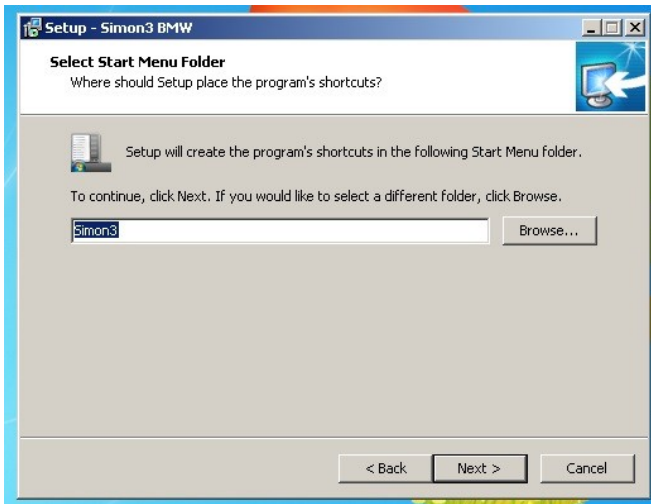
- After unzip the file run it (double click it), for windows 8 and 8.1 run **it as Administrator** is more recommended (right click -> Run as Administrator). Click Next to start the installation.



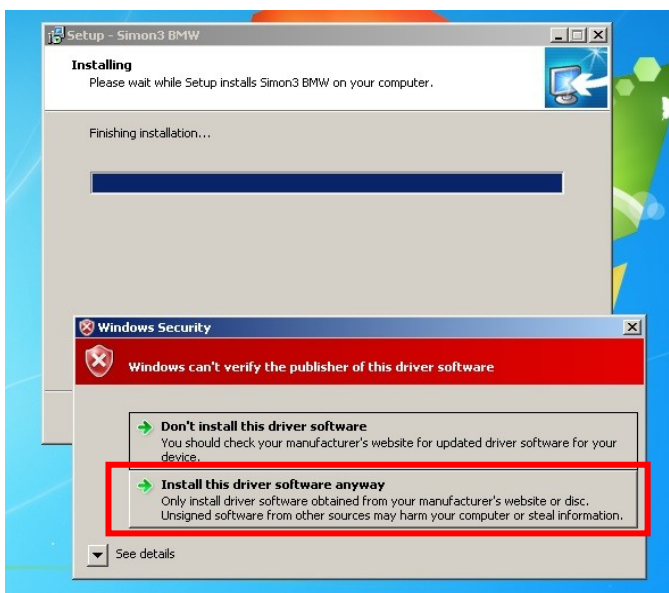
- Leave the default folder path pre-load in the installation wizard and click next.



- You need to plug the Simon 3 ODBII interface to the laptop and click next to install the proper usb drivers.



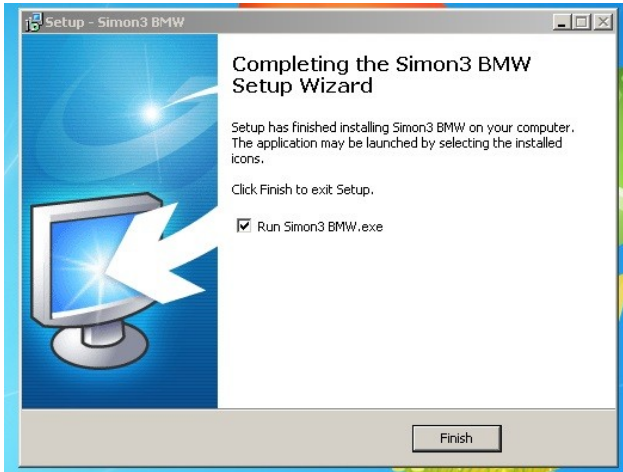
- The Name of the folder for the start menu. Click next to continue.



- Install this driver software anyway is the right option to do in this case, for windows 8 and 8.1 users you will need to disabled the driver's enforcement.

- Follow this link for Windows 8 and 8.1:

<http://www.isunshare.com/windows-8/how-to-disable-or-enable-driver-signature-enforcement-in-windows-8-and-8.1.html>

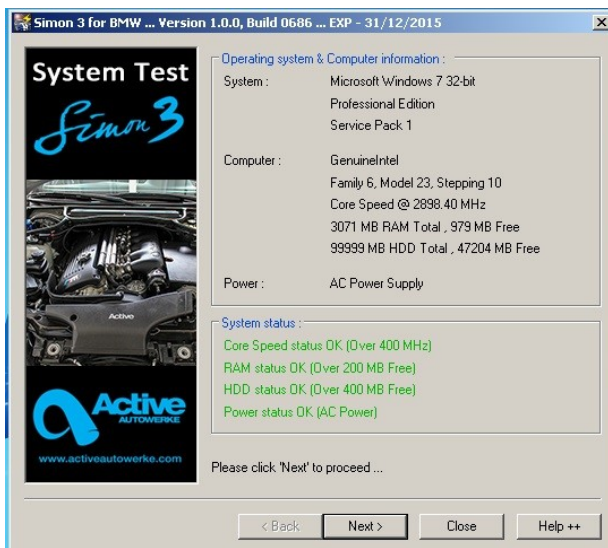


- Now you can run the simon 3 software.

## Reading the car



- The welcome screen contains a description of what this tool does. Click next to star to read the car.



- System test this simon 3 requires a minimum of :
  - ✓ 400 MHz CPU
  - ✓ 200 Mb RAM memory
  - ✓ 400 Mb free hard drive space



accessories. Maintaining battery voltage is very important.

- Identifying the ECU will be the first step on this, follow this steps:
  - ✓ Put a battery charger on the car (voltage above 12.5 volt and Amps above 10 A) to maintain stable voltage. **Do not use a trigger or battery jumpers (those aren't powerful enough to hold stable voltage for long periods).**
  - ✓ Put the ignition key in second position, the dashboard need to be light up.
  - ✓ Turn off the AC, radio and all



- The ECU is being Identify by the Simon 3 so click next.

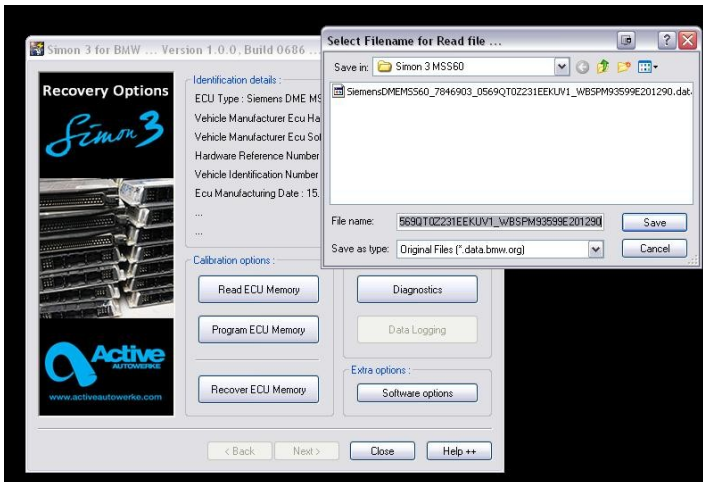


- Here is a description of the features :

- ✓ **Reading the ECU memory:** will just read the software from the car (the car will keep the software is just a read function)
- ✓ **Program ECU memory:** This will program the modify file into the car.
- ✓ **The recovery ECU memory:** is a backup option to force an original file, just in case of

emergency for any voltage drop or ECU writing problem.

- ✓ **Diagnostics:** Read trouble codes, clear them and save them for reference.
- ✓ **Software options:** No recommend yet, do not use this at this time.



- To read the ECU memory the software will ask you where to save the file, also will suggest a name for the file with the ECU\_type\_SoftwareNumber\_vinNumber.data.bmw.org (this will be the original file from the car). You can name it for example like this:  
  
John\_Smith\_E92M3\_stock

- Click Save and wait for the

procedure to end. The reading of the file may take anywhere from 3 minutes to 90 minutes depending on the ECU type , we recommend to **Leave the driver's door open to prevent the ECU from going to sleep.**



Send the file by email to your sales representative person and CC the software department as well at softwaresupport@activeautowerke.com.....and wait for the tune to be emailed back from us. Always is very important to send as much information as you can, follows this example re flash request:

Customer Name and Last Name: example John Smith

VIN: 4USBT53565LX01536

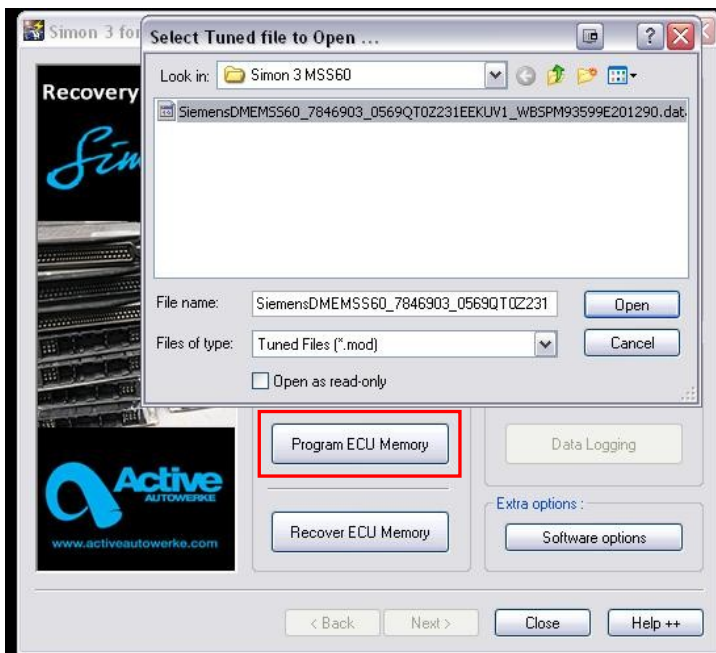
Year: 2010

Model: E92 M3

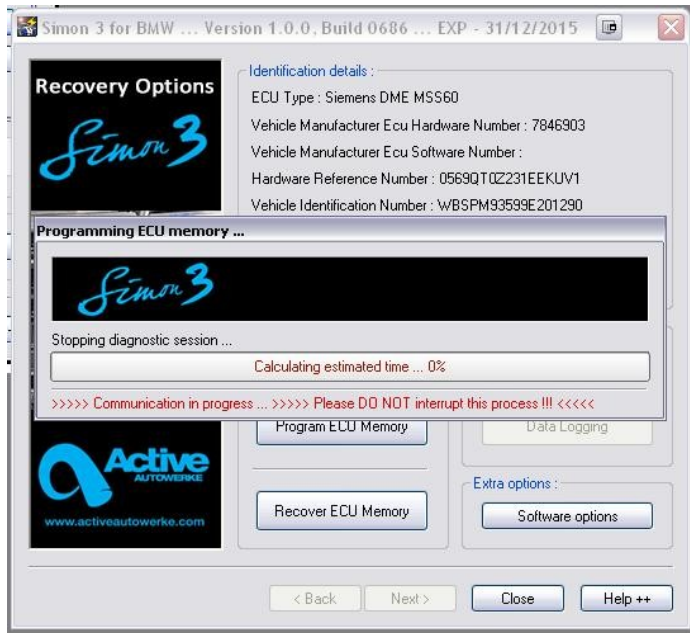
Fuel Octane Gas rating: 93 AKI, 98 RON

Modifications on the car: AA air filter, cat back Exhaust.

## Flashing the car



- .mod files are tunes files you will receive from us, select the Program ECU Memory option and remember to follow the next steps:
  - ✓ Put a battery charger on the car (voltage above 12.5 volt and Amps above 10 A) stable voltage. **Do not use a trigger or battery jumpers (those aren't powerful enough to hold stable voltage for long periods).**
  - ✓ Put the ignition key in second position, the dashboard need to be light up.
  - ✓ Turn off the AC, radio and all accessories.
  - ✓ Leave the driver's door open to prevent the ECU from going to sleep.



- The bar graph will go across during the writing procedure, wait until finish.
- Take out the key from the ignition and wait for 15 seconds.
- Start the car.

## Diagnostics

You can clear trouble codes (this will clear the SES light), Clearing the Adaptations is a way to run the software 100 % accurate, the ECU will try always to adapt to some scenarios and will make adjustments, sometimes is better to clear those adaptations maps after a re-flash, so the car will run using the new software version and it will make the adjustments from there.

